

PASH ANTIQUES

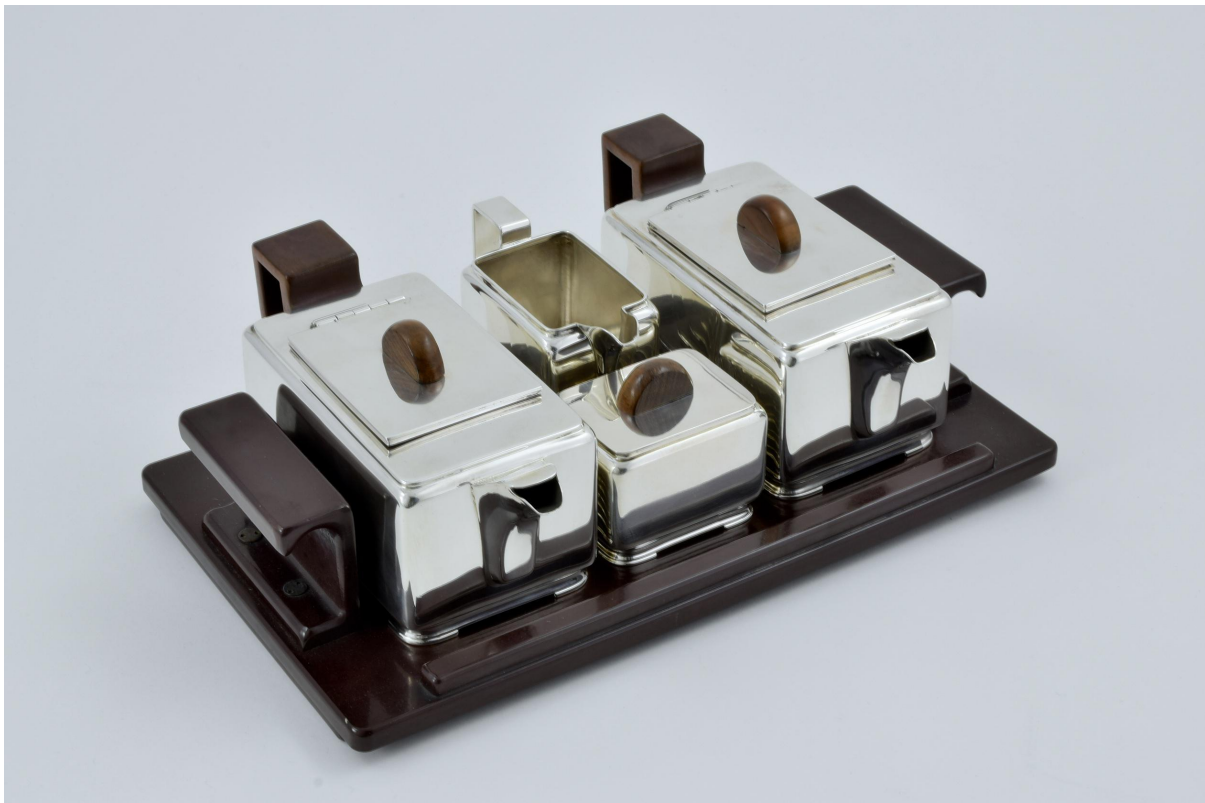
A. PASH & SONS OF MAYFAIR

Harold Stabler A Rare Art Deco Sterling silver four piece teaset on Bakelite tray

REF: 12518

Height: 11 cm (4.3") Width: 32 cm (12.6") Depth: 20 cm (7.9") Weight: 1462 g

£22,000



Hallmarked for Adie Brothers, Birmingham 1935.

Also signed for the designer Harold Stabler

Comprising two silver teapots, a silver cream jug, a silver sugar bowl, and a fitted Bakelite tray

Harold Stabler (1872-1945): Silversmith, Designer and Pioneer of Modern British Industrial Art

Harold Stabler was one of the most influential British silversmiths and designers of the early twentieth century, a figure who successfully bridged the ideals of the Arts and Crafts movement with the emerging principles of modern industrial design. Born in Levens,

Westmorland (now Cumbria), on 10 June 1872, he trained initially as a woodcarver before studying at Liverpool University's art department.

In the 1890s Stabler became associated with the Arts and Crafts movement, settling in Hammersmith, a centre of activity for followers of William Morris. He served as manager of the Keswick School of Industrial Art and later became Head of the Art Department at the Sir John Cass Institute in London, a position he held for three decades. He also taught at the Royal College of Art, influencing a generation of designers and craftsmen.

Stabler first achieved recognition as an enameller and silversmith. His silverwork combined technical mastery with imaginative decoration, often incorporating brightly coloured enamels and naturalistic motifs. Contemporary critics praised the vitality and originality of his designs, which ranged from jewellery and domestic silver to ceremonial objects. Among his notable commissions were a silver-and-enamel mace for Westminster Cathedral, the ceremonial collar of the Royal Victorian Order, and work for the Goldsmiths' Company. He regularly exhibited with the Arts and Crafts Exhibition Society and at the Royal Academy.

What distinguished Stabler from many Arts and Crafts contemporaries was his willingness to embrace industrial production. After visiting the influential Deutscher Werkbund exhibition in Germany in 1914, he became convinced that good design should reach a wider public through modern manufacturing methods. He was a founding member of the Design and Industries Association (DIA), established in 1915 to promote cooperation between designers and industry and to raise standards in British manufacturing.

Throughout the 1920s and 1930s Stabler applied his talents across an unusually broad range of media. He designed silverware, stainless-steel tableware, pottery, glass, jewellery, posters and architectural decoration. His industrial work included designs for Pyrex glass and modern tea services produced by firms such as Adie Brothers and Firth Vickers. The "Cumberland" stainless-steel tea set, introduced in the late 1930s, remained in production for many years and exemplified his belief that elegant design should be accessible through mass production.

Stabler also left a lasting mark on London's visual environment. He designed decorative ceramic tile panels for London Underground stations, depicting counties, landmarks and historical themes associated with the capital and its surrounding regions. These works demonstrated his ability to combine craftsmanship, public art and modern transport design.

His creative life was closely linked to that...